

Investigation of Submarine Groundwater Discharge in the Arctic and Lofoten Area

Lofoten Cruise
RV GOSars
Nov-Dec 2021

Reza Saghravani (PhD Student)
Marine Biogeochemistry Lab, IOPAN
IEDS, University of Silesia

Supervisors:
Dr. Beata Szymchycha
Assoc. Prof. Karol Kuliński

Project is coordinated by:



Project is implemented in partnership with:



Introduction

Project/ Aim/Cruises

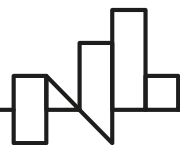
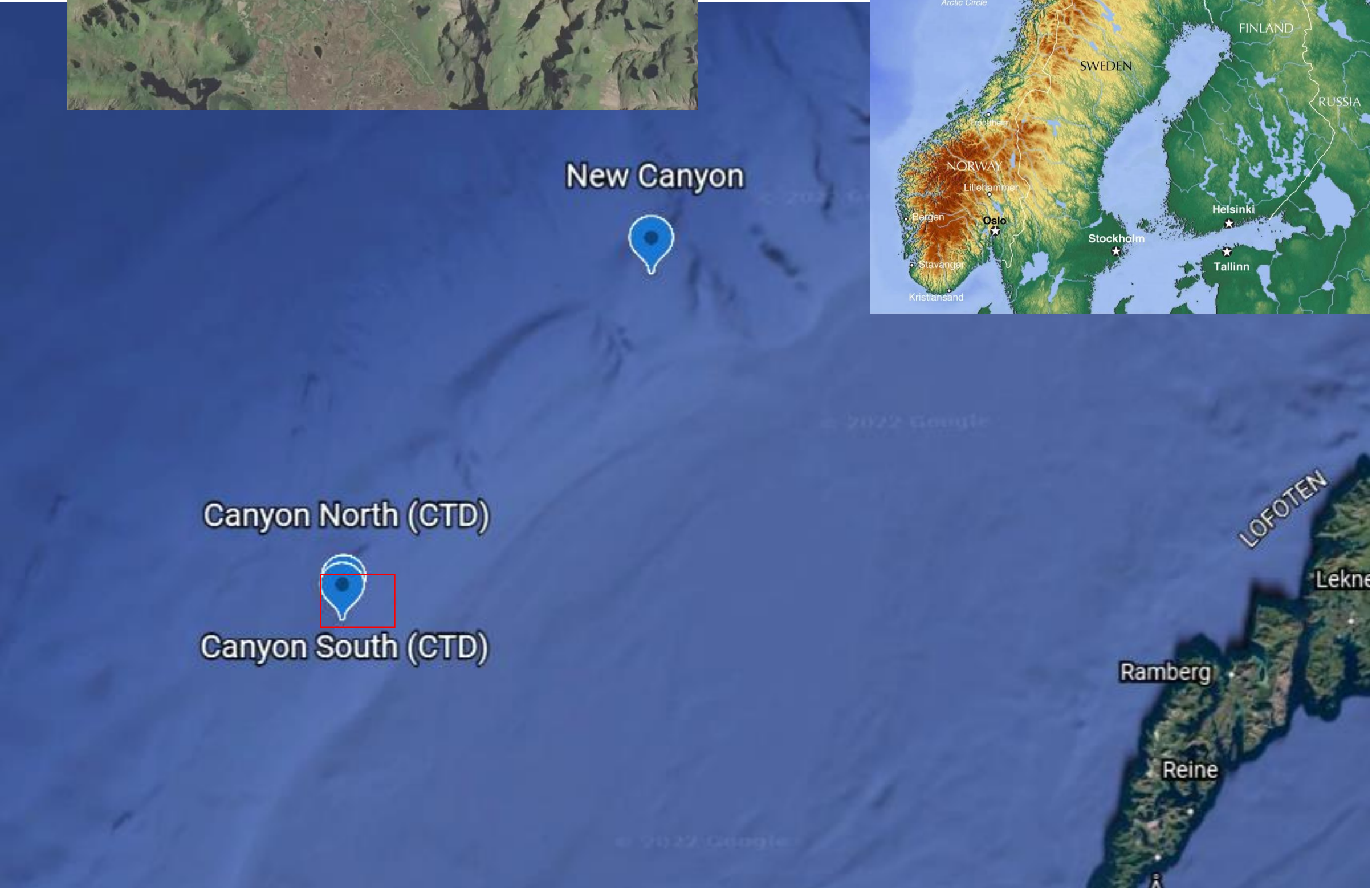
- PhD Student: **IOPAN/University of Silesia**
- Project: *ArcticSGD: Submarine Groundwater Discharge in a Changing Arctic Region: Scale and Biogeochemical impact*
- Previous Cruise (Arex 2021; July 25th – September 9th): Western Svalbard (Isfjorden, Krossfjorden, Kongsfjorden and Hornsund) and Norwegian Fjords
- Responsibility during Lofoten cruise: *Water Column Sampling (Rosette Sampler)*
DIC/DOC
TA
CI
pH
Metals
Nutrients



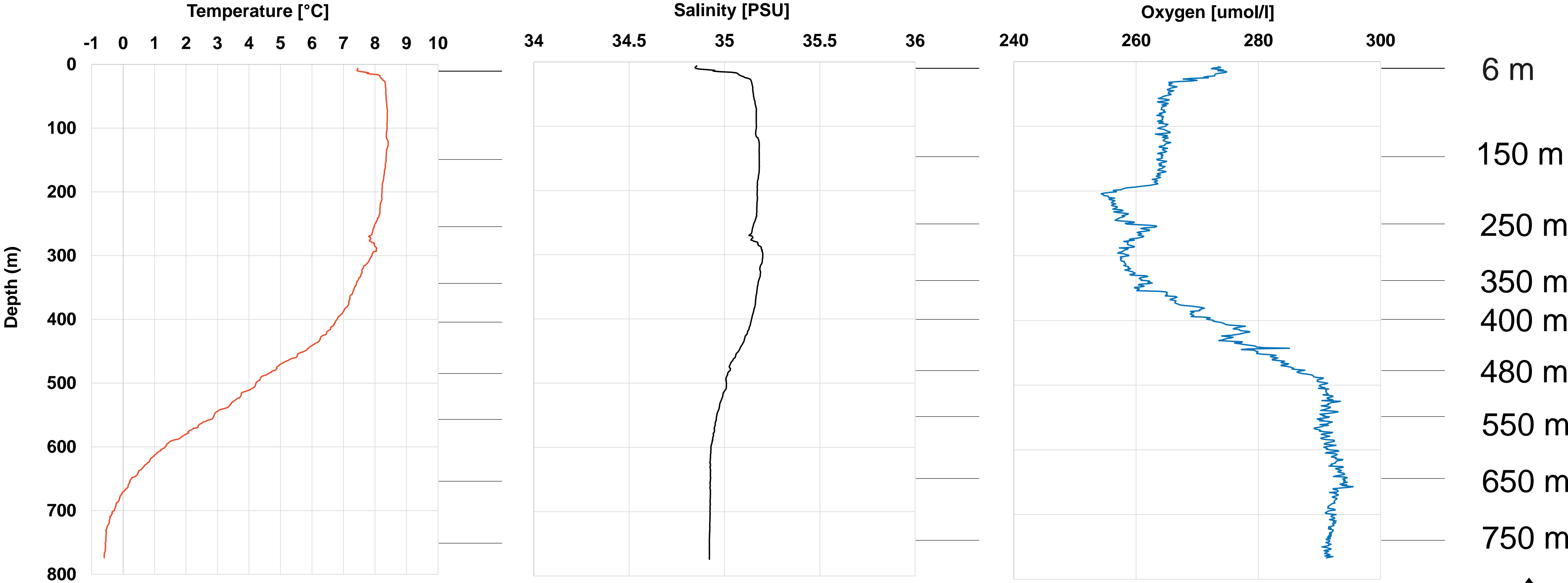
UNIVERSITY OF SILESIA
IN KATOWICE



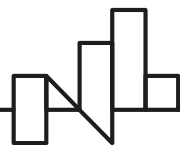
Sampling Locations



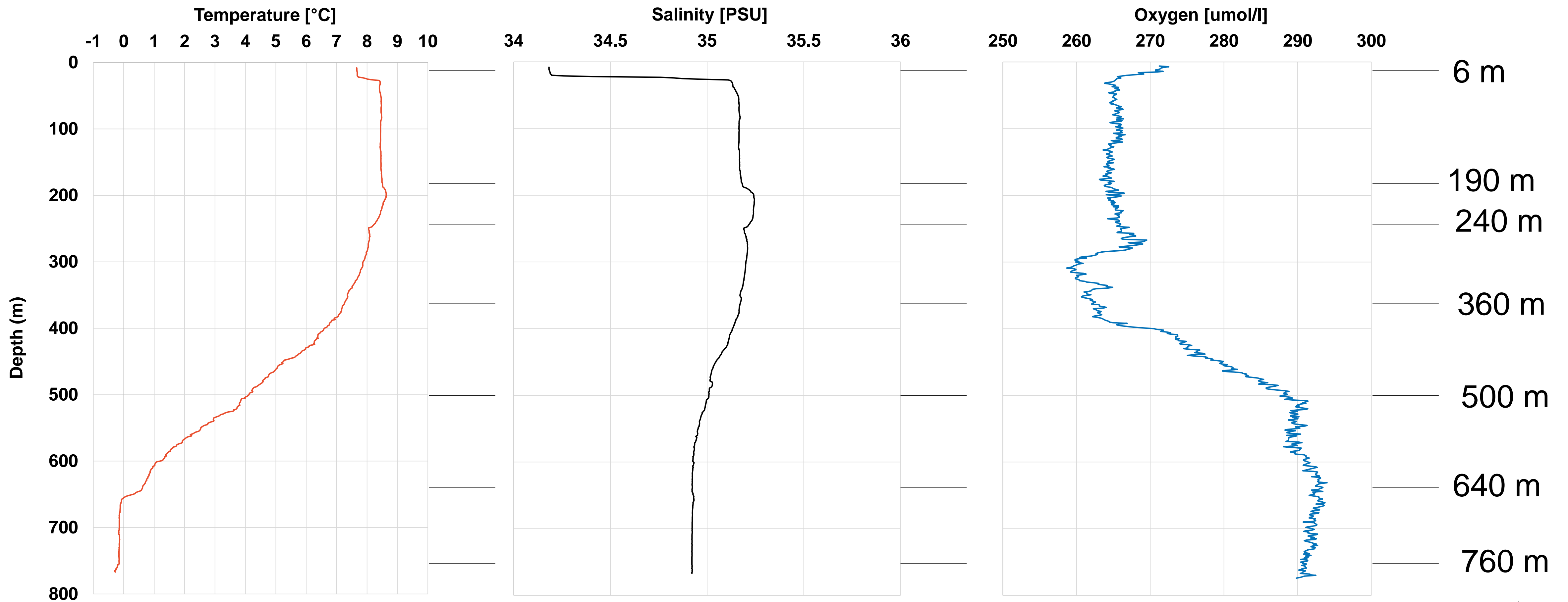
CTD (Canyon North)



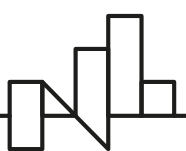
Sampling Depths 



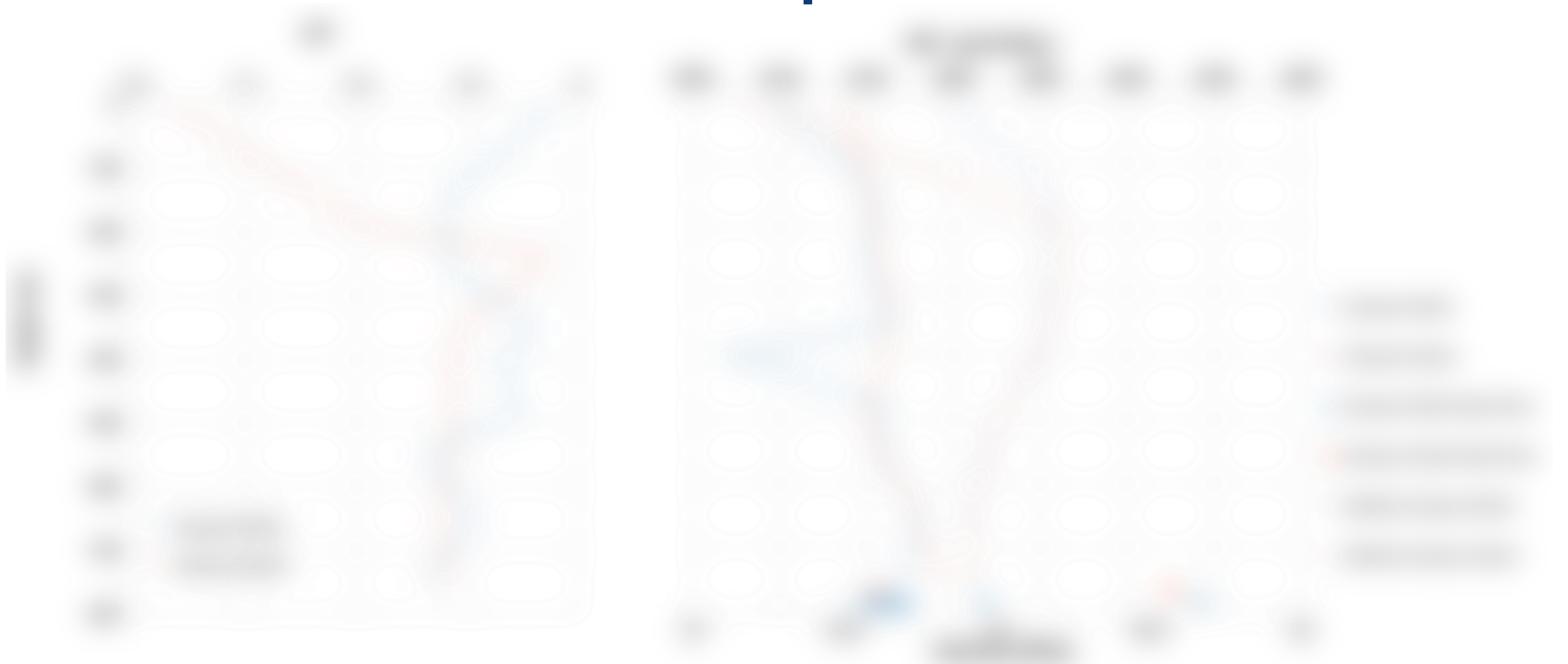
CTD (Canyon South)



Sampling Depths 



DIC/pH



Nutrients



Steps to Plan the Future

Next Steps:

- Interpreting nutrients results (Spitsbergen)
- Writing first publication based on nutrients in water columns
- Writing second publication based on nutrients in pore waters

Future Plans:

- Summer School
- Professional traineeship
- Preparation for Arex 2022 Cruise to Spitsbergen



Thank you!

**Project financed by the Norwegian Financial Mechanism 2014–2021 (85%) and national co-financing (15%)
within GRIEG Programme
"Submarine Groundwater Discharge in a Changing Arctic Region: Scale and Biogeochemical impact"
Project No. 2019/34/H/ST10/00645**

www.eeagrants.org
Facebook, Twitter, LinkedIn, Instagram
YouTube: EEANorwayGrants
Mail: info-fmo@efta.int

Programme Operator: